



Manufacturers & Suppliers of

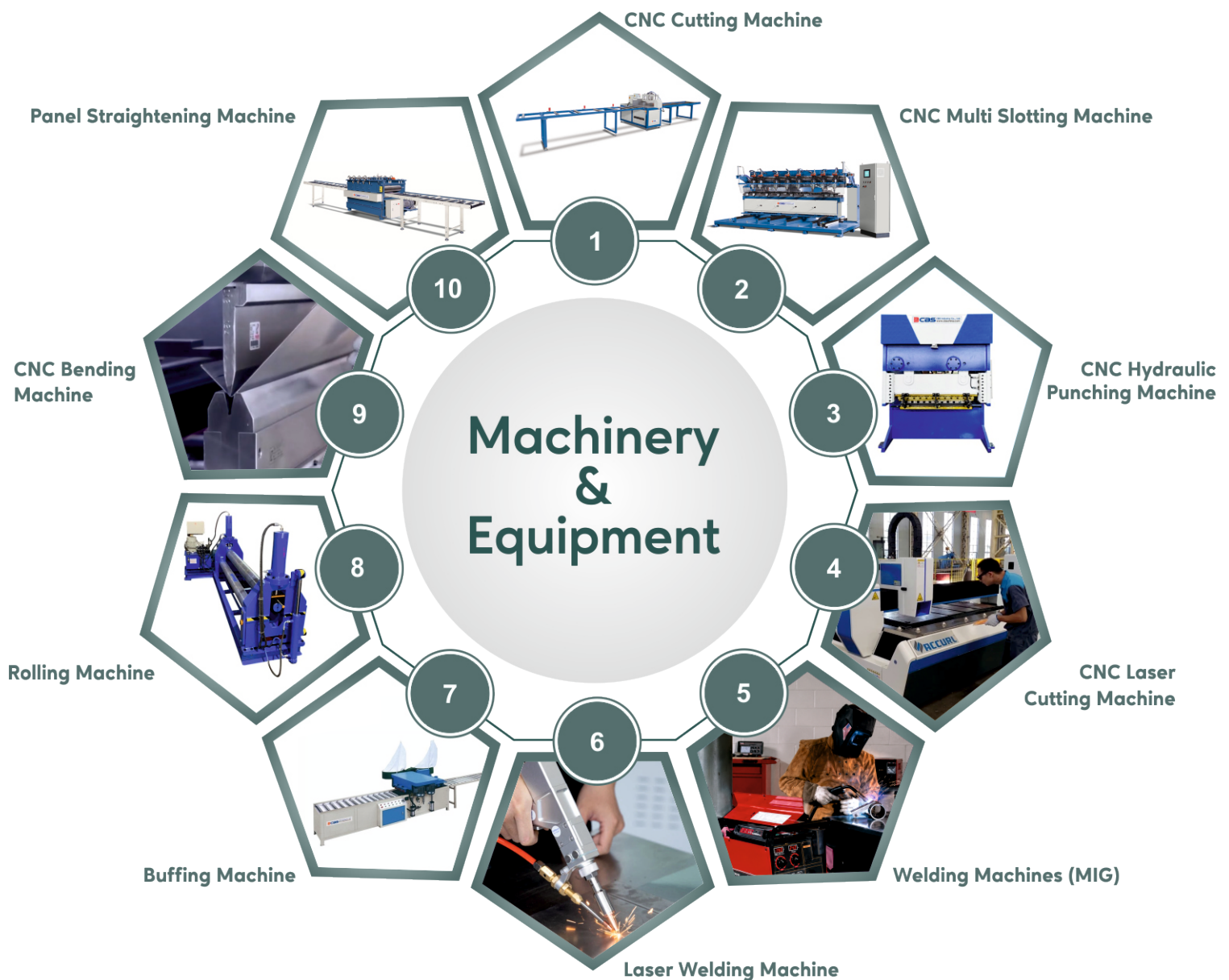
ALUMINIUM FORMWORK SYSTEMS

Eco-friendly construction methodologies

About us

Aluedge formwork solution came into being in the year 2021 and over the years it successfully satisfied each and every buyer with its world-class products and matchless services. The company has been led by Mr.Naren B Khokhriya, who serves in the capacity of Managing Partner of the organization. The company is committed to on-time delivery of its superior quality product and world - class services. Seeking the opportunity and successful growth of the company. We have 18000 sq.ft area of our production plant with 5 MT EOT crane host.

Production Facilities



Manufacturing Process

Design & Development

1

Raw Material Quality
Checking

2

Cutting to Size

3

Hole Punching

4

Notching
(As per Design)

5

Welding & Grinding

6

Straightening Process

7

Protective Coating

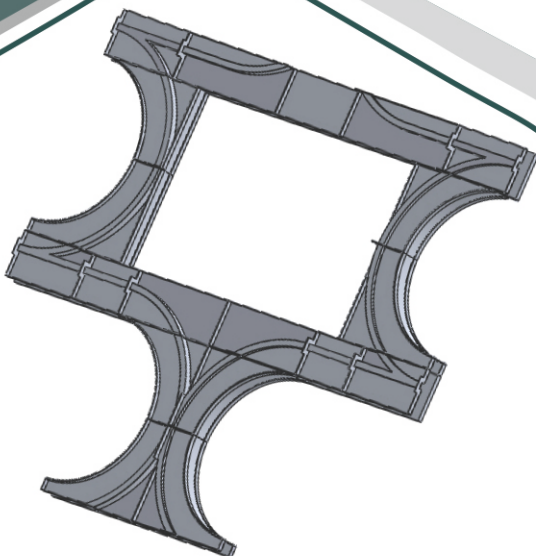
8

Quality Check

9


Packing for Safe
Transit

10



Monolithic Formwork System (Full set)

PU premium form finish 

4mm surface thickness 

T6 6061 Alloy of Aluminium 

Wall panel load carrying capacity upto - 50 KN. 

Heavy Support stiffer 7-8 nos.
in a standard panel & side rail
hence no undulation formation 

22kg/sqm system weight 

Dimension, alignment & hole accuracy 

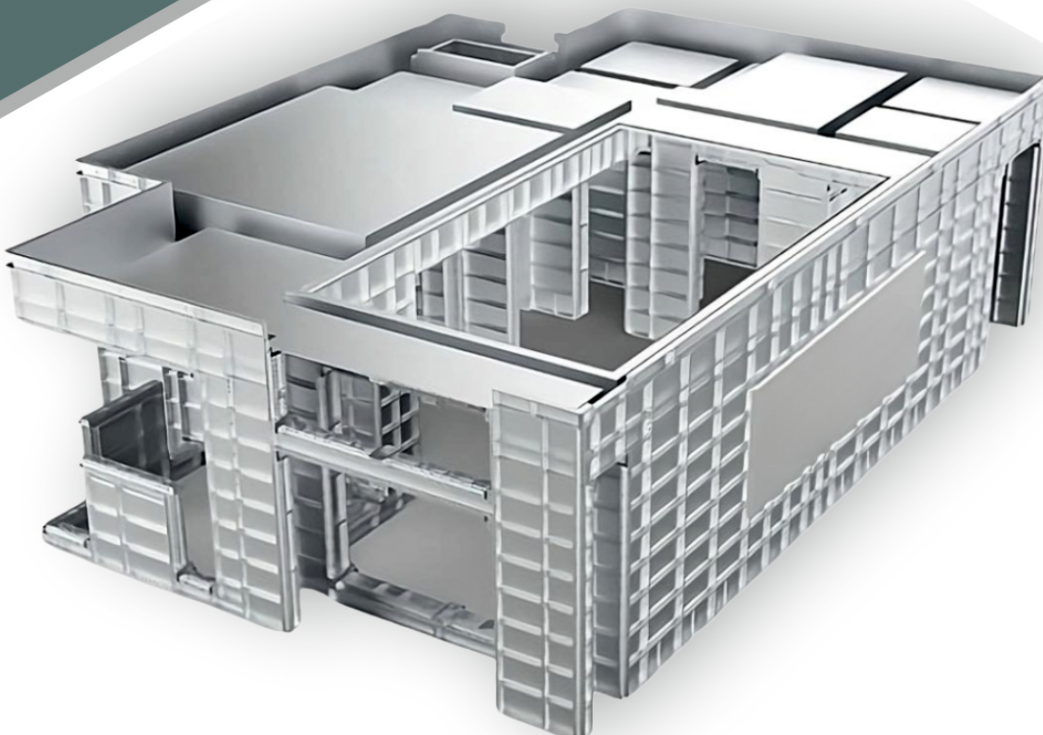
Standard panel sizes 

Up to 50mm to 600mm

Height - 1200mm

2400mm

3000mm



Vertical Formwork System

PU lacquer form finish



High Load Bearing
Capacity 50 KN.



Tie-Rod system for
larger size columns



Heavy support stiffer 7-8 nos.
in a standard panel



250+ repetitions



Carbon steel grade E350 wall
ties for high tensile strength



3.6 mtr. single pour capacity



Dimension, alignment &
hole accuracy



Standard panel sizes



Up to 50mm to 600mm
Height - 2400mm
2700mm
3000mm
Customized Length



- ✓ WALL FORMWORK
- ✓ ROUND COLUMN FORMWORK
- ✓ RETAINING WALL FORMWORK
- ✓ SPECIAL ELIVATION FORMWORK
- ✓ ROMAN FORMWORK

Product Parts

1



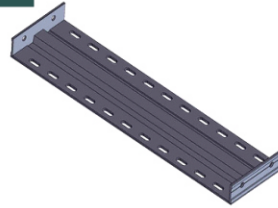
ALUMINIUM PANEL

2



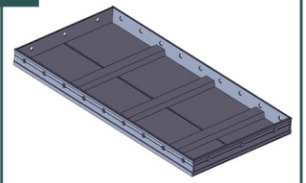
DECK PANEL

3



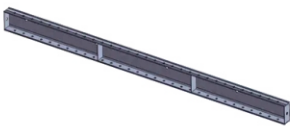
BEAM BOTTOM
PANEL

4



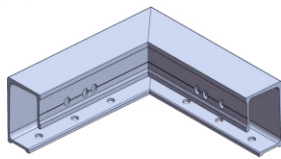
BEAM SIDE PANEL

5



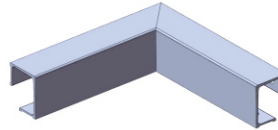
KICKER PANEL

6



KICKER INTERNAL
CONER PANEL

7



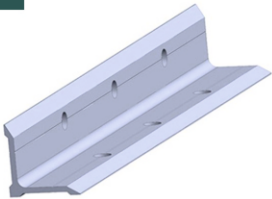
KICKER EXTERNAL
CONER PANEL

8



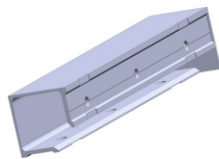
ROCKER ANGLE

9



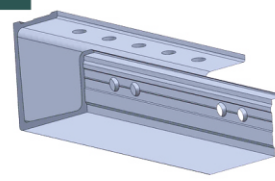
CORNER ANGLE

10



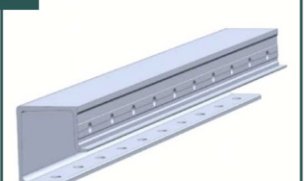
INTERNAL CORNER

11



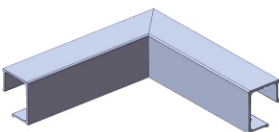
SOFT LENGTH

12



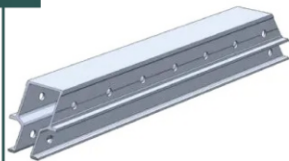
SOFFIT INTERNAL
CONER

13



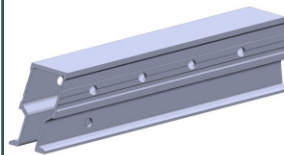
SOFFIT EXTERNAL
CONER

14



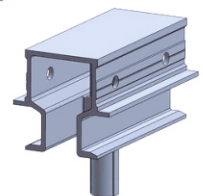
MID BEAM

15



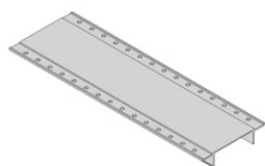
END BEAM

16



PROP HEAD

17



BEAM BOTTOM

18



BKS PATTI

19



WALL TIE

20



JOINT BAR

Accessories

1



WALL TIE SLEEVE

2



TIE ROD

3



WING NUT

4



ANCHOR NUT

5



WASHER

6



ALIGNMENT CLAIM

7



PVC CONE SLEEVE

8



PANEL PULLER

9



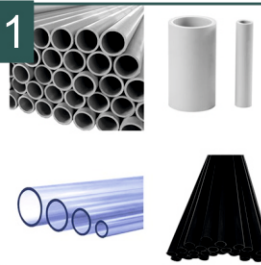
WALL TIE PULLER

10



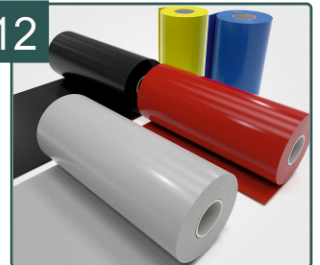
PULL JACK

11



PVC PIPE

12



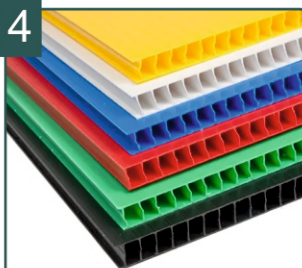
PVC ROLL

13



SCRAPER

14



POLYETHYLENE CORRUGATED SHEET

15



HOLE BARI

16



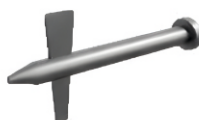
WEDGE PATTI

17



PIN BOLT WEDGE

18



LONG PIN WITH WEDGE

19



L PIN

20



KICKER BOLT



ALUEGE

FORMWORK SOLUTIONS

Plot No. A-277, B/ H Devam Eco Ind park,
Vi-Posara (Maroli), Ta - Jalalpure, Di - Navasari-396436
E-mail: aluedge.formworksolutions@gmail.com
www.aluedgeformwork.com

Technical Support
+91 8849496745

Sales Support
+91 83475 57100